

Fitting for 2 symmetrically opening wooden or metal shutters up to 60 kg (132 lbs.). With screwed on running track. Ceiling or architrave mounting. Optionally with angled profile for wall mounting.

Product highlights



Aesthetics

Attractive design solution for exciting and modern façade design



Security

The shutters withstand even stormy winds,
both open and closed

Technical specifications



Max. 60 kg (132 lbs.)



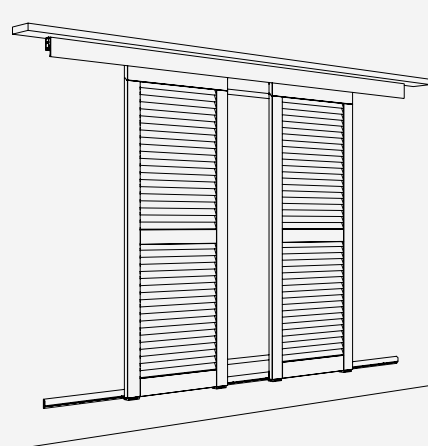
Max. 3200 mm (10' 5 31/32")



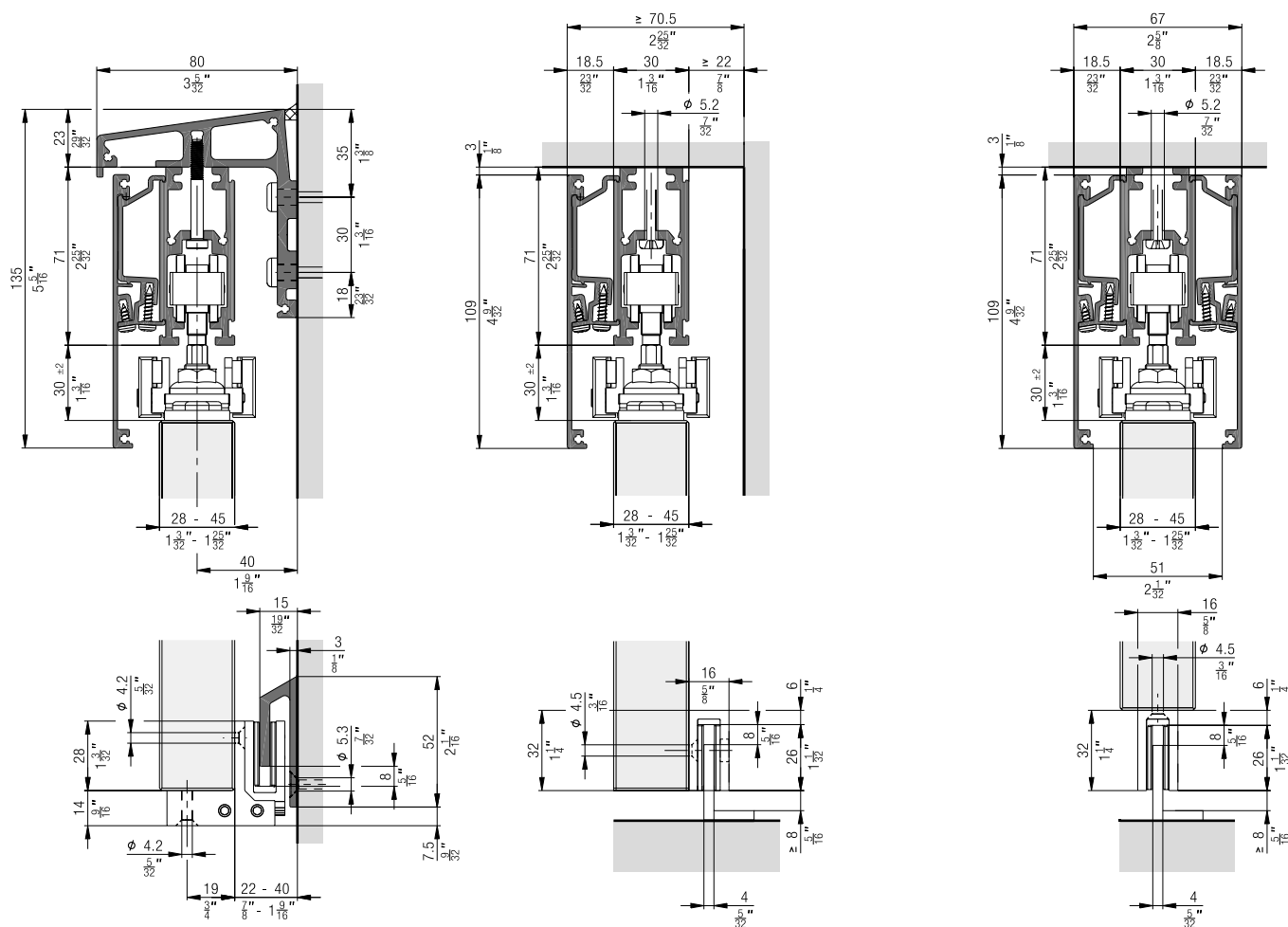
500–1500 mm (1' 7 11/16" to 4' 11 1/16")



28–45 mm (1 3/32" to 1 25/32")



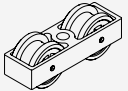
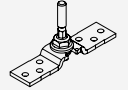
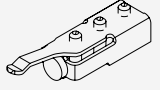
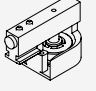
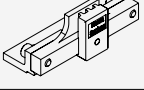
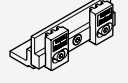
Installation examples




Set for 2 sliding shutters up to 60 kg (132 lbs.)

	No.
Hawa Frontslide 60 A Symmetric 2, for 2 sliding shutters	25118

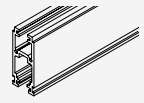
Set consisting of:

		25118	No.
	Two-wheeled running gear, M8, plastic wheels	4	17119
	Top fixing plate, with suspension bolt M8, stainless steel	4	24562
	Track stop, with adjustable retainer	1	17027
	Guide pulley wheel matching with running track Hawa Frontslide 60-140	2	24793
	Driver, laterally adjustable for manual systems	1	20353
	Toothed belt lock for manual systems	1	20352

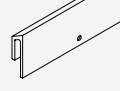
Toothed belt
Toothed belt length calculation: 2 x system width

		No.
	Toothed belt, 5 m (16' 4 27/32"), fibre glass reinforced, black	19667
	Toothed belt, 8 m (26' 2 31/32"), fibre glass reinforced, black	19682
	Toothed belt, 10 m (32' 9 11/16"), fibre glass reinforced, black	19668
	Toothed belt, 15 m (49' 2 9/16"), fibre glass reinforced, black	20370
	Toothed belt, 50 m (164' 1/2"), fibre glass reinforced, black	19669

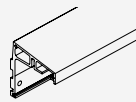
Running tracks

		mm (inch)	No.
	Running track, aluminum, anodized, pre-drilled	3500 (11' 5 25/32")	24839
		6000 (19' 8 7/32")	24795
		cut to size	24796


Guide tracks

		mm (inch)	No.
	Guide track, aluminum, anodized, pre-drilled	6000 (19' 8 7/32")	24460
		cut to size	24462

Angled profile for 2 sliding levels


		mm (inch)	No.
	Angled profile for one sliding level, aluminum, anodized, pre-drilled	6000 (19' 8 7/32")	21378
		cut to size	21379
	Angled profile for one sliding level, aluminum, pre-drilled	6000 (19' 8 7/32")	21380
		cut to size	21381

Connecting pins for running tracks and angled profiles

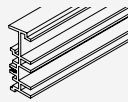
		No.
	Connecting bolts, 6-piece set	17221

Mounting screws for angled profiles

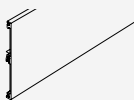
The special mounting screw must be used for optimum attachment of the running track to the angled support profile.

		No.
	Special fixing screws, for securing running track to angled profile support, 10-piece set (3 pieces per meter)	19774


Spacer profiles

		mm (inch)	No.
	Spacer profile for angled profile support, aluminum, anodized	6000 (19' 8 7/32")	19724
		cut to size	19727

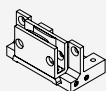
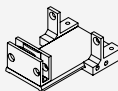
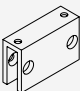
Panels

		mm (inch)	No.
	Cover panel, aluminum, anodized	3500 (11' 5 25/32")	24845
		6000 (19' 8 7/32")	24808
		cut to size	24809
	Cover panel, aluminum	6000 (19' 8 7/32")	24810
		cut to size	24811




Panel attachment components

	No.
 Parts for fitting running track cover, at least every 500 mm (1' 7 11/16"), 5-piece set	24767

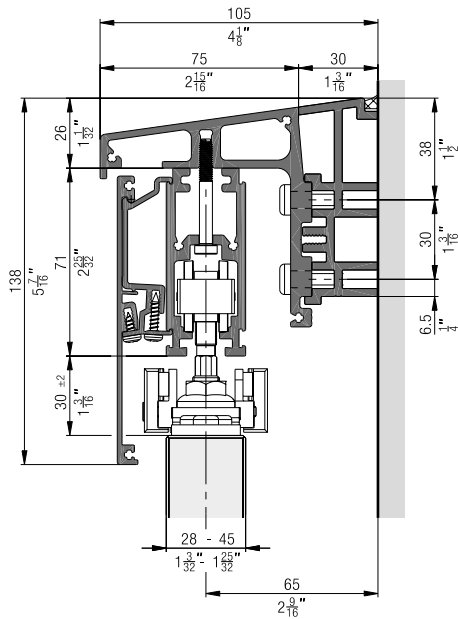
Guides

	No.
 Floor guide unit, short, for guide track	24543
 Floor guide unit, long, for guide track	24544
 Guide slider, for screw fixing	24542

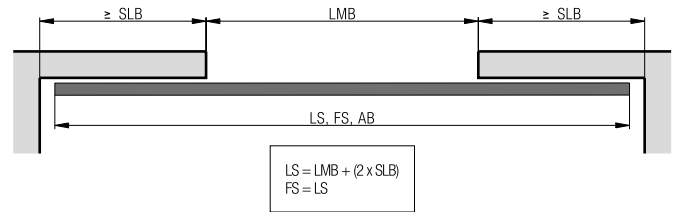
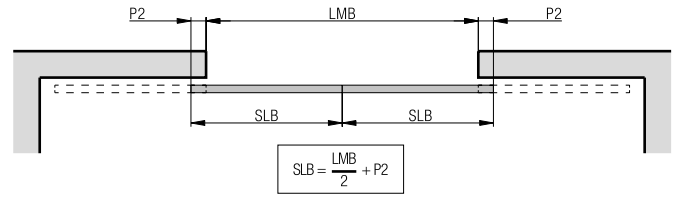
Accessories

		No.
	Front cover plates, ceiling mounting, aluminum, anodized, 1 pair	24573
	Front cover plates, ceiling mounting, aluminum, 1 pair	24575
	Front cover plates, wall mounting without spacer profile, aluminum, anodized, 1 pair	24577
	Front cover plates, wall mounting without spacer profile, aluminum, 1 pair	24580
	Front cover plates, wall mounting with spacer profile, aluminum, anodized, 1 pair	24583
	Front cover plates, wall mounting with spacer profile, aluminum, 1 pair	24586

Wall mounting with spacer profile (weatherboard)

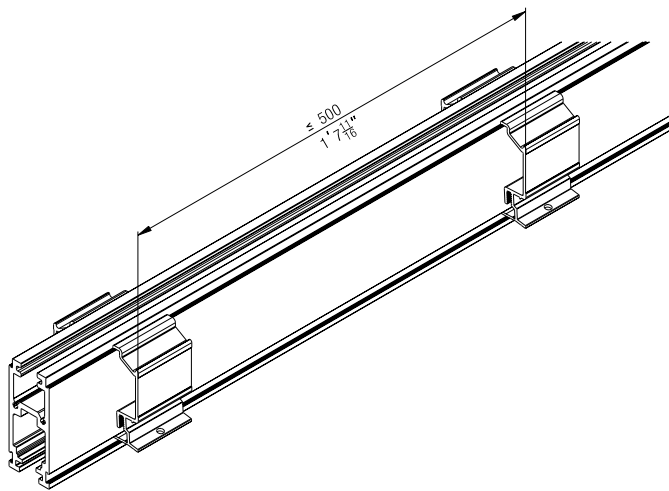


Sliding shutter width calculations

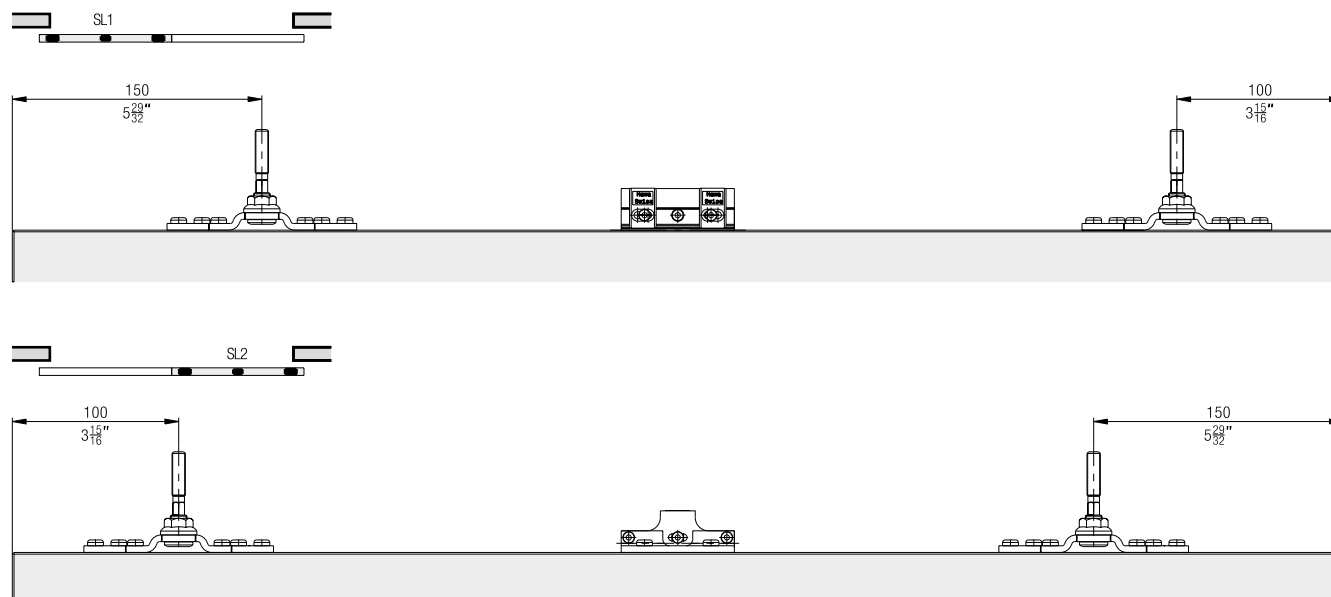


AB = System width
 LMB = Inside clearance
 AL = Number of sliding shutters
 SLB = Sliding shutter width
 P = Sliding shutter overlap
 LS = Running track
 FS = Guide track

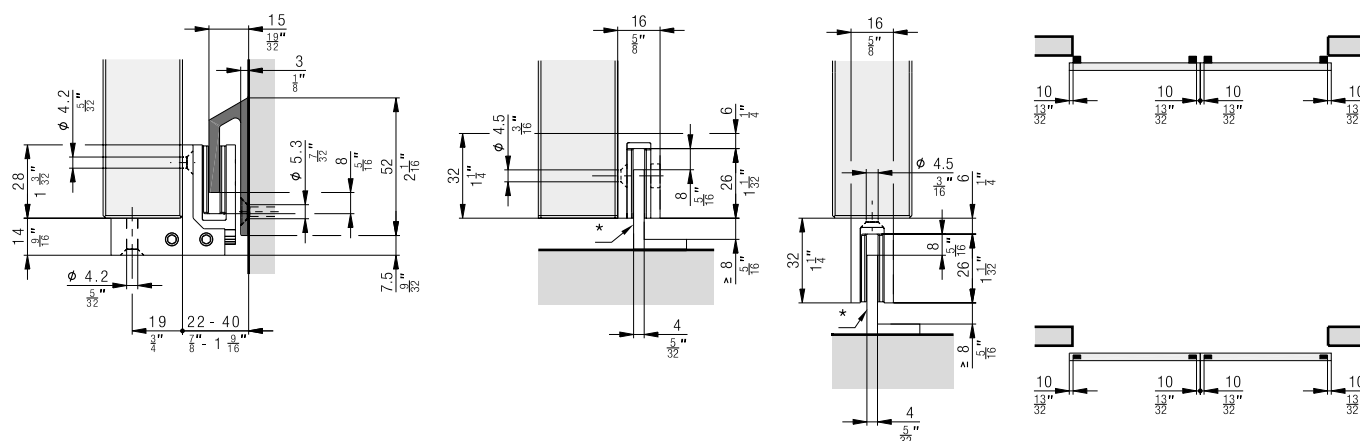
Panel attachment component installation



Suspension points



Guides



* to be provided by customer

Accessories

- Sliding shutter bolts from page 190

Planning/execution

- Corrosion resistance class 4 in accordance with EN 1670 (very good resistance)
- Wind resistance class overview from page 198

Further information about the product can be found on www.hawa.com.