

**Automated fitting with SMI interface for 2 symmetrically opening wooden or metal shutters up to 80 kg (176 lbs.). With screwed on running track. Ceiling or architrave mounting.**

#### Product highlights



##### Comfort

Automated system with building control interface  
Optimized individual use of daylight



##### Productivity

Increases energy efficiency in the building

#### Technical specifications



Max. 80 kg (176 lbs.)



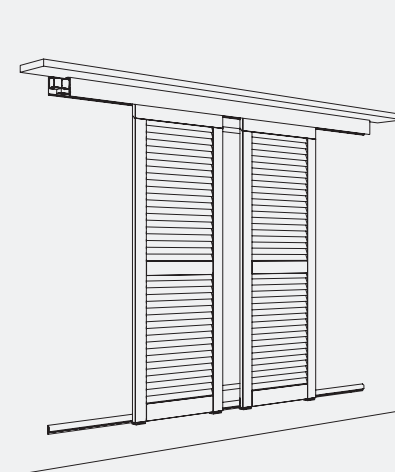
Max. 3200 mm (10' 5 31/32")



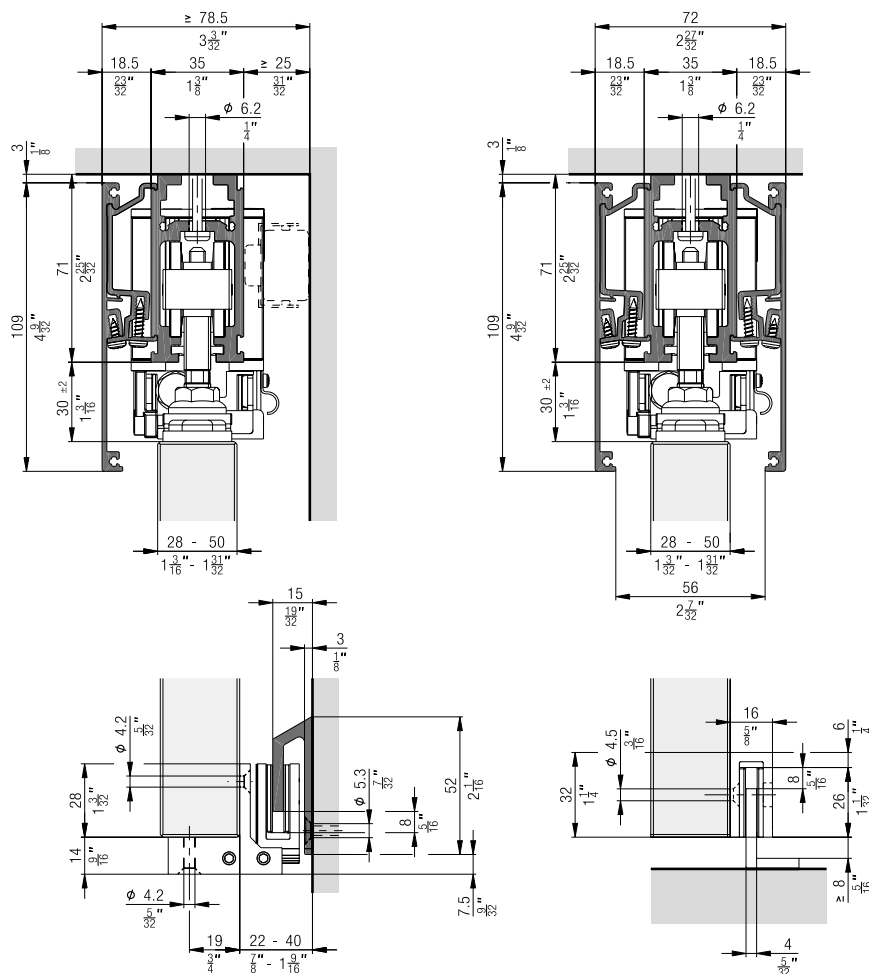
600–1875 mm (1' 11 5/8" to 6' 1 13/16")  
(Max. shutter area 6.24 m<sup>2</sup> (67 ft<sup>2</sup>))



28–50 mm (1 3/32" to 1 31/32")



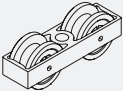
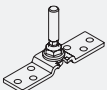
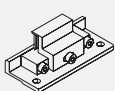
#### Installation examples



**Set for 2 sliding shutters up to 80 kg (176 lbs.)**

	No.
Hawa Frontslide 100 Matic Symmetric 2, for 2 sliding shutters	25139

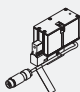
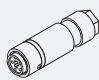
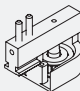
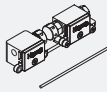
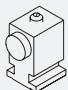
**Set consisting of:**

		25139	No.
	Two-wheeled running gear, M10, plastic wheels	4	24552
	Top fixing plate, stainless steel, with hanger bolt M10	4	24564
	Driver for Symmetric-installations	1	19655


**Set Motronic 100 SMI**

	No.
Hawa Motronic 100 SMI for Hawa Frontslide 100 Matic, incl. control unit, toothed belt lock and pulley wheel	30521

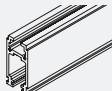
**Set consisting of:**

		30521	No.
	Hawa Motronic 100 SMI with integrated control and connecting cable with a premounted Wieland plug	1	30317
	Wieland connector for Hawa Motronic 60/100/140 SMI	1	30277
	Pulley wheel for automatic mechanism	1	24792
	Toothed belt lock	1	19654
	End stop, aluminum	2	24786


**Toothed belt**
**Toothed belt length calculation: 2 x system width**

	No.
 Toothed belt, 2.7 m (8'10 5/16"), fibre glass reinforced, black	20208
Toothed belt, 5 m (16' 4 27/32"), fibre glass reinforced, black	19667
Toothed belt, 8 m (26' 2 31/32"), fibre glass reinforced, black	19682
Toothed belt, 10 m (32' 9 11/16"), fibre glass reinforced, black	19668
Toothed belt, 15 m (49' 2 9/16"), fibre glass reinforced, black	20370
Toothed belt, 50 m (164' 1/2"), fibre glass reinforced, black	19669

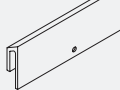
**Running tracks**

	mm (inch)	No.
 Running track, aluminum, anodized, pre-drilled	3500 (11' 5 25/32")	24840
	6000 (19' 8 7/32")	24797
	cut to size	24798


**Connecting pins for running tracks**

	No.
 Connecting bolts, 6-piece set	17221


**Guide tracks**

	mm (inch)	No.
 Guide track, aluminum, anodized, pre-drilled	6000 (19' 8 7/32")	24460
	cut to size	24462

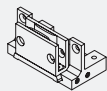
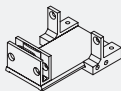
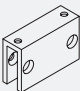
**Panels**

	mm (inch)	No.
 Cover panel, aluminum, anodized	3500 (11' 5 25/32")	24845
	6000 (19' 8 7/32")	24808
	cut to size	24809
Cover panel, aluminum	6000 (19' 8 7/32")	24810
	cut to size	24811

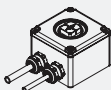

### Panel attachment components

		No.
	Parts for fitting running track cover, at least every 500 mm (1' 7 11/16"), 5-piece set	24767


### Guides

		No.
	Floor guide unit, short, for guide track	24543
	Floor guide unit, long, for guide track	24544
	Guide slider, for screw fixing	24542

### Start-up box

		No.
	Commissioning box	23789
	SMI adapter for commissioning box	30363

### Accessories



		No.
	Front cover plate, aluminum, anodized, for ceiling fitting, 1 pair	24813
	Front cover plate for ceiling fitting, aluminum, 1 pair	24815

### Technical data Hawa Motronic 100 SMI

Drive with integrated controller, with SMI 3.0 BF interface, CE tested

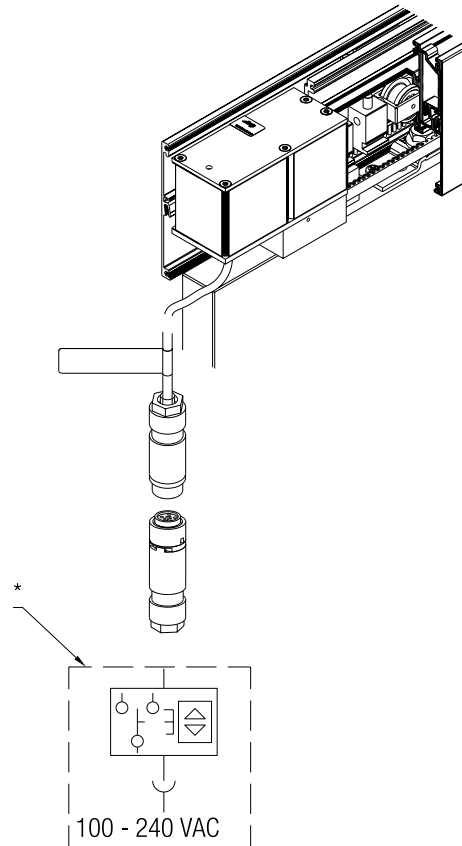
Feed:	100 – 240 VAC, 50/60 Hz, 30 W
Max. preliminary fusing:	16 A
Overvoltage category:	II
Degree of protection:	I
Temperature range:	-20° C to +60° C
Contamination level:	1
IP protection level:	IP 54
Max. speed:	70 mm/s
Max. drive power:	100 N (with internal overload protection)
Switch elements:	Customer-provided
Mains isolation device:	Customer-provided

### Type plate

<b>Hawa Motronic 100</b>			I- →
Artikel-Nr.	30317	<b>Hawa</b>	
Kontakt	www.hawa.com		
Charge	20ZZ/YYYYYY		
Key-ID	0016XXXXXX, Bj: 20ZZ		
Antriebskraft max.	100 N, IP54		
100-240 VAC, 50/60 Hz, 30 W			
Geschwindigkeit max. 7 cm/s			
Betriebstemp. -20 °C bis +60 °C			I+ →

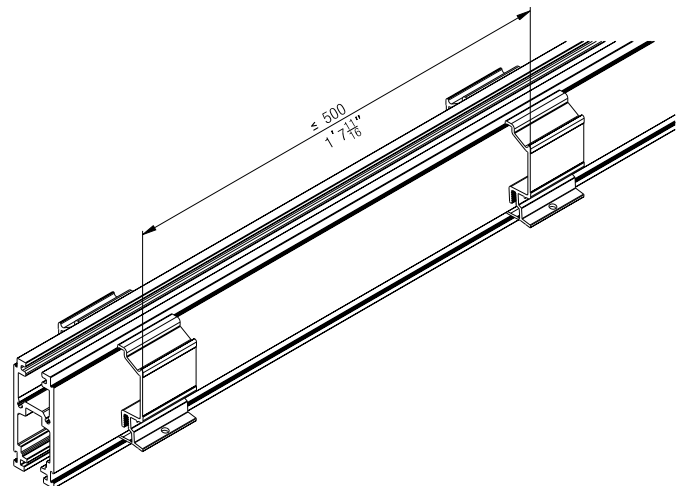
### Actuation and operation of the system

The system can be operated with normal commercial sun blind switches.

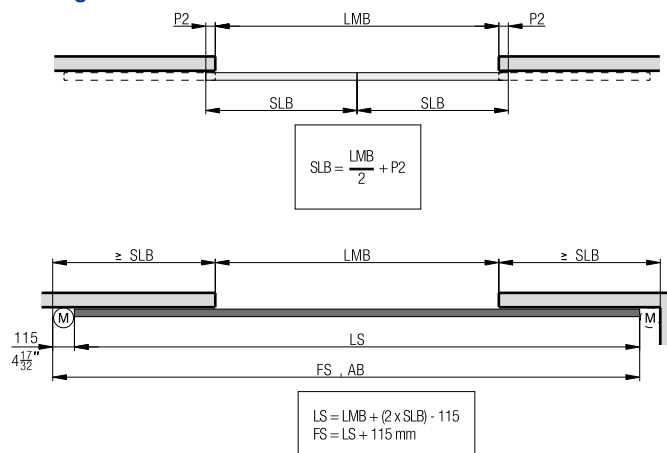


\* to be provided by customer

### Panel attachment component installation



## Sliding shutter width calculations



AB = System width

LMB = Inside clearance

SLB = Sliding shutter width

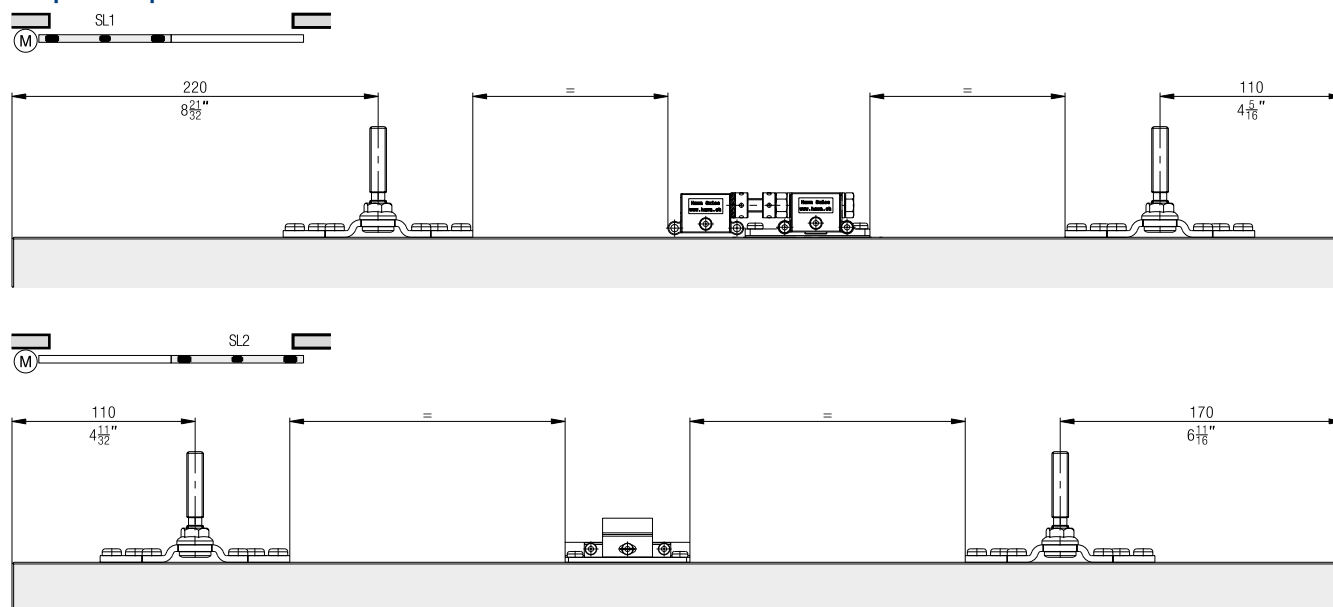
P = Sliding shutter overlap

LS = Running track

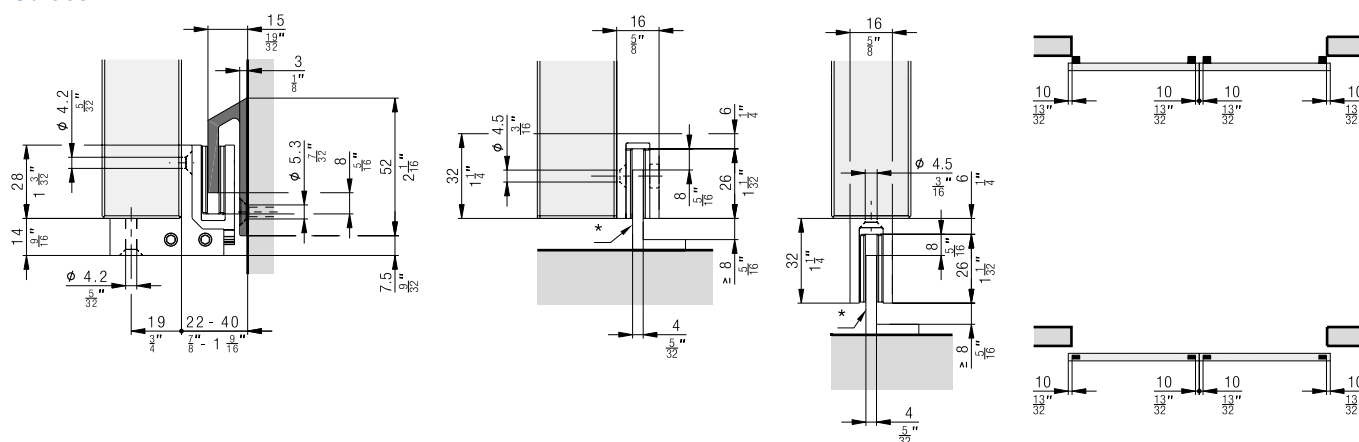
FS = Guide track

M = Minimum space for drive unit

## Suspension points



## Guides



\* to be provided by customer

## Planning/execution

- Corrosion resistance class 4 in accordance with EN 1670
- Wind resistance class overview from page 198

Further information about the product can be found on [www.hawa.com](http://www.hawa.com).