

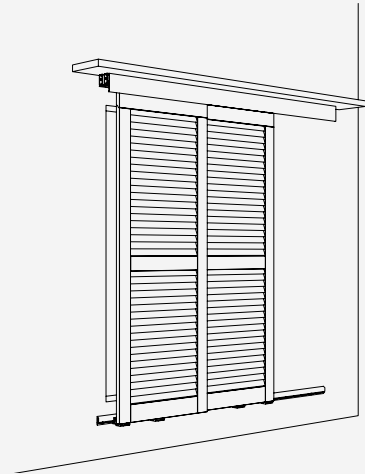
**Fitting for 2 wooden or metal shutters up to 60 kg (132 lbs.), with screwed on running track. Ceiling or architrave mounting. Optionally with angled profile for wall mounting.**

### Product highlights

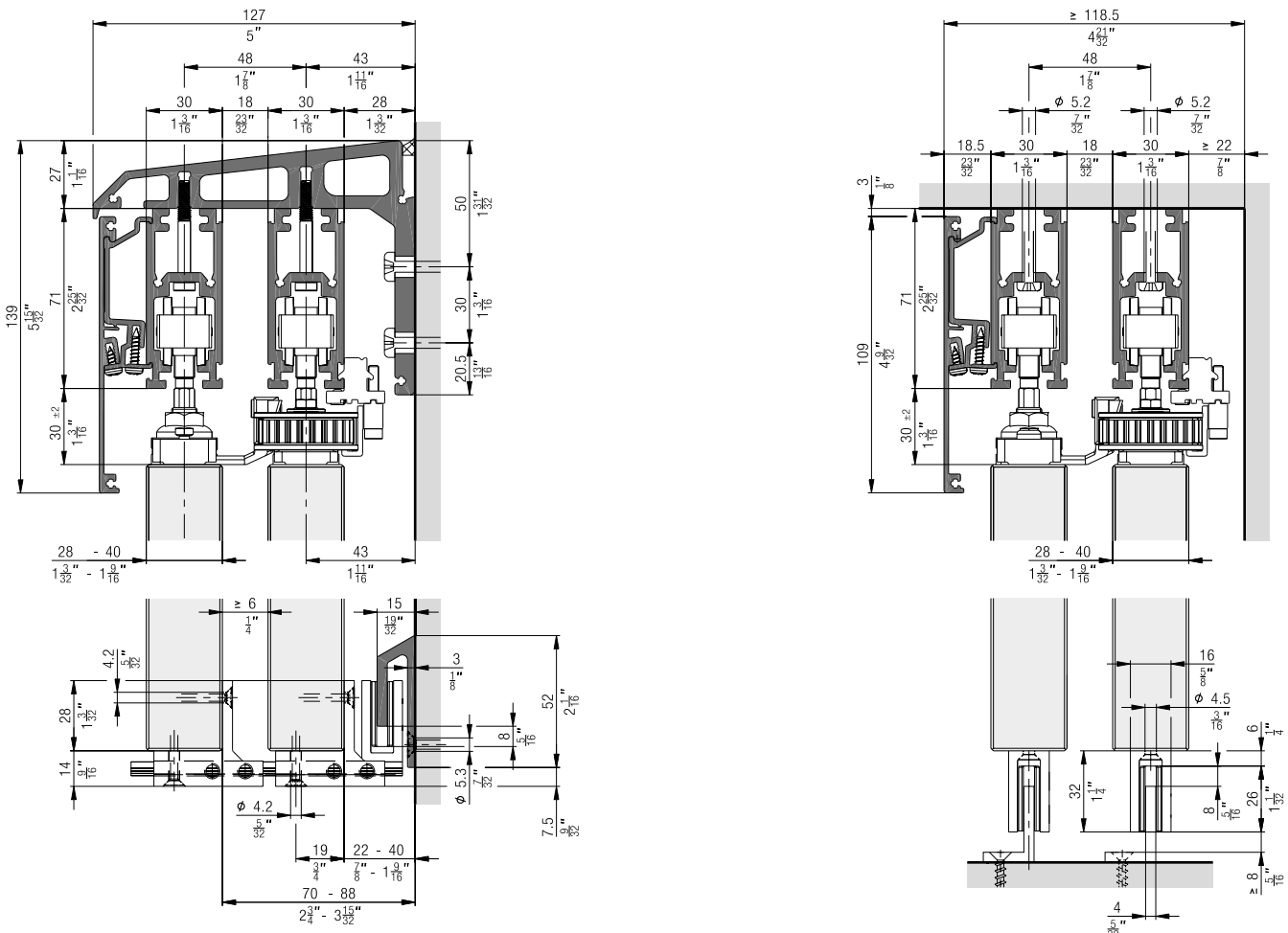
- Aesthetics** Attractive design solution for exciting and modern façade design
- Security** The shutters withstand even stormy winds, both open and closed

### Technical specifications

- Max.** 60 kg (132 lbs.)
- Max.** 3200 mm (10' 5 31/32")
- 550–1200 mm (1' 9 21/32" to 3' 11 1/4")  
(Max. shutter area 3.84 m<sup>2</sup> (41 ft<sup>2</sup>))
- 28–40 mm (1 3/32" to 1 9/16")



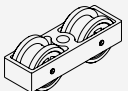
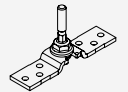
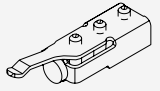
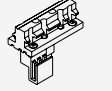
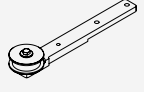
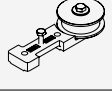
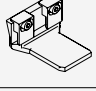
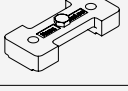

### Installation examples



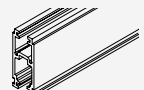
**Set for 2 sliding shutters up to 60 kg (132 lbs.)**

	No.
Hawa Frontslide 60 A Telescopic, for 2 sliding shutters	25120

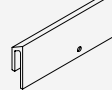
**Set consisting of:**

		25120	No.
	Two-wheeled running gear, M8, plastic wheels	4	17119
	Top fixing plate, with suspension bolt M8, stainless steel	4	24562
	Track stop, with adjustable retainer	2	17027
	Clamp for toothed belt	1	24777
	Guide pulley wheel, with fixing plate, long	1	20139
	Guide pulley wheel, with fixing plate, short	1	20140
	Driver, wide	1	20141
	Driver counter-plate, wide	1	20246
	Toothed belt, 2.7 m (8'10 5/16"), fibre glass reinforced, black	1	20208

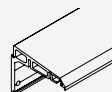
**Running tracks**

		mm (inch)	No.
	Running track, aluminum, anodized, pre-drilled	3500 (11' 5 25/32")	24839
		6000 (19' 8 7/32")	24795
		cut to size	24796


**Guide tracks**

		mm (inch)	No.
	Guide track, aluminum, anodized, pre-drilled	6000 (19' 8 7/32")	24460
		cut to size	24462

**Angled profile for 2 sliding levels**

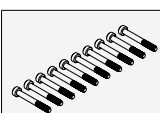
		mm (inch)	No.
	Angled profile for two sliding level, aluminum, anodized, pre-drilled	6000 (19' 8 7/32")	21384
		cut to size	21385
	Angled profile for two sliding level, aluminum, pre-drilled	6000 (19' 8 7/32")	21386
		cut to size	21387

**Connecting pins for running tracks and angled profiles**

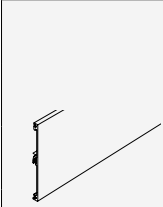
		No.
	Connecting bolts, 6-piece set	17221

**Mounting screws for angled profiles**

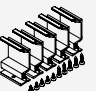
**The special mounting screw must be used for optimum attachment of the running track to the angled support profile.**

		No.
	Special fixing screws, for securing running track to angled profile support, 10-piece set (3 pieces per meter)	19774

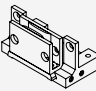
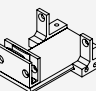
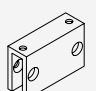
**Panels**

		mm (inch)	No.
	Cover panel, aluminum, anodized	3500 (11' 5 25/32")	24845
		6000 (19' 8 7/32")	24808
		cut to size	24809
	Cover panel, aluminum	6000 (19' 8 7/32")	24810
		cut to size	24811

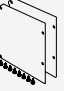
### Panel attachment components

	No.
	Parts for fitting running track cover, at least every 500 mm (1' 7 11/16"), 5-piece set 24767

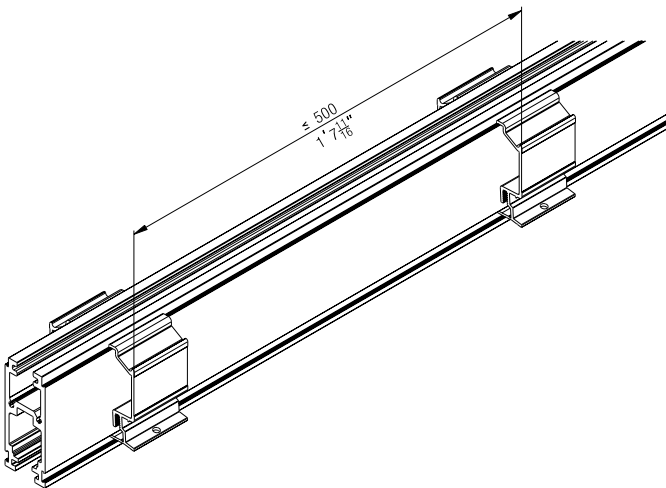
### Guides

	No.
	Floor guide unit, short, for guide track 24543
	Floor guide unit, long, for guide track 24544
	Guide slider, for screw fixing 24542

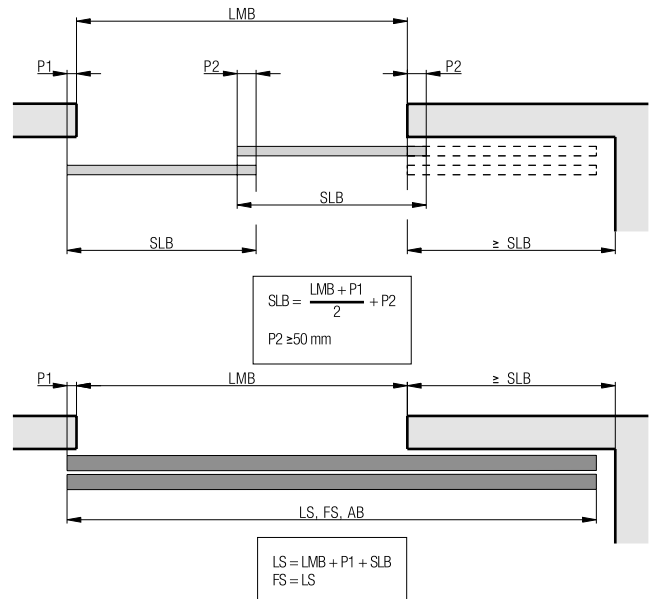
### Accessories

	No.
	Front cover plates for two sliding levels, wall fitting, aluminum, anodized, 1 pair 24821
	Front cover plates for two sliding levels, wall fitting, aluminum, 1 pair 24824

### Panel attachment component installation

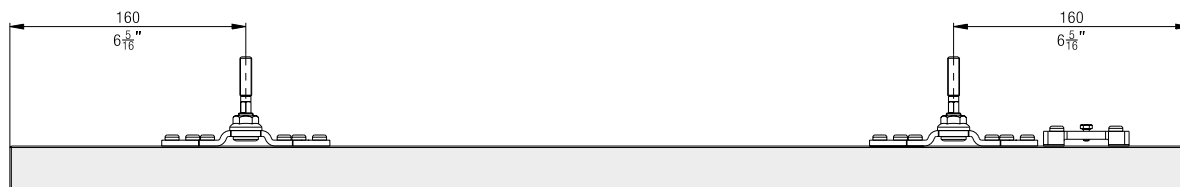


### Sliding shutter width calculations

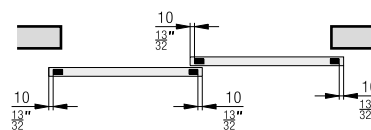
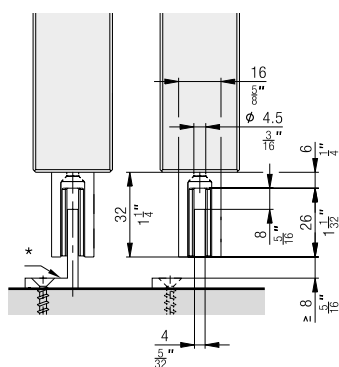
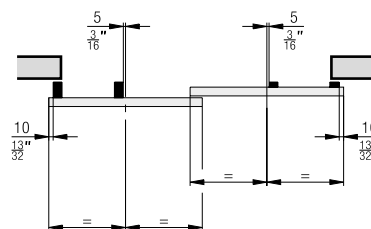
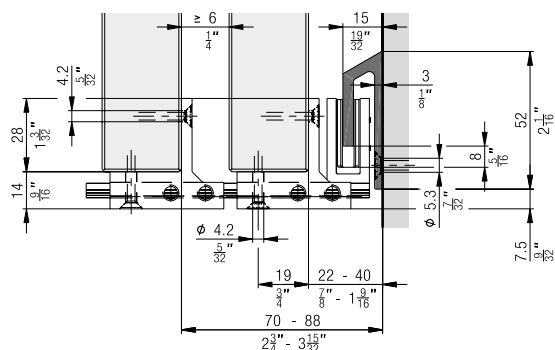


AB = System width  
 LMB = Inside clearance  
 AL = Number of sliding shutters  
 SLB = Sliding shutter width  
 P = Sliding shutter overlap  
 LS = Running track  
 FS = Guide track

## Suspension points



## Guides



\* to be provided by customer

## Accessories

- Sliding shutter bolts from page 190

## Planning/execution

- Corrosion resistance class 4 in accordance with EN 1670 (very good resistance)
- Wind resistance class overview from page 198

Further information about the product can be found on [www.hawa.com](http://www.hawa.com).